

全地面起重机 / All Terrain Crane

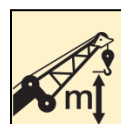
XCA60_E



60 t



48 m



63 m



目录

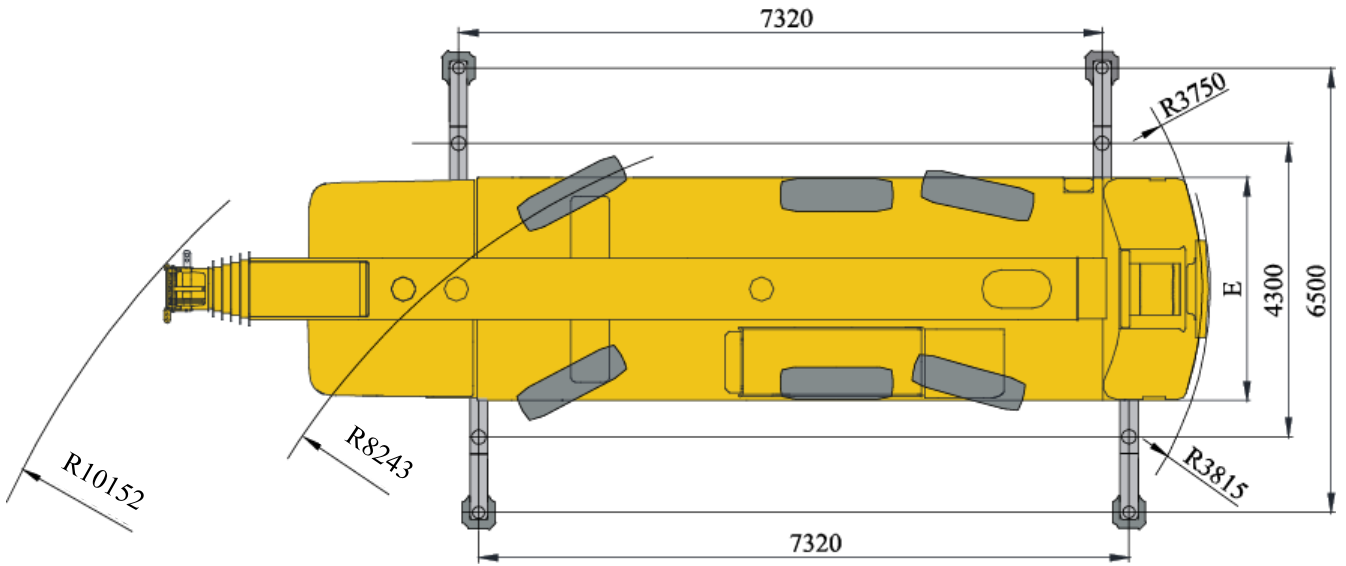
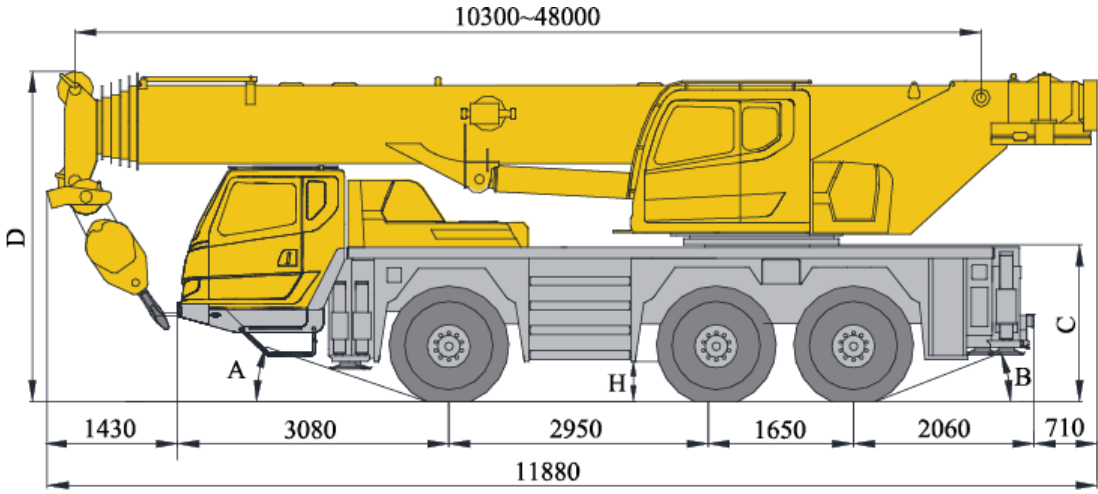
Contents

目录

Contents

尺寸参数 Dimensions	3
技术规格 Technical Specifications	4-7
重量/作业速度 Weight / Working speeds	8
平衡重 Counterweight	9
臂架组合方案 Boom / Jib combinations	10
主臂 Boom	11-21
主臂+副臂 Boom + Jib	22-26
符号标识 Description of symbols	27
注意事项 Notes	28

尺寸参数 Dimensions



	A	B	C	D	E	H
385/95 R 25 (14.00 R 25)	19°	21°	1750mm	3755mm	2550mm	330mm
445/95 R 25 (16.00 R 25)	20°	23°	1800mm	3805mm	2550mm	380mm
525/80 R 25 (20.5 R 25)	20°	23°	1800mm	3805mm	2700mm	380mm

技术规格

Technical specifications



Chassis

Frame	Designed and manufactured by XCMG, made of high strength steel with inverted trapezium cross-section.
Outrigger	H-type outrigger, outrigger beam is one-stage telescoping with push-pull outrigger float and two telescoping working position (fully-extended and half-extended) to satisfy various working condition requirements. Outrigger control panel is controlled by CAN bus located on the sides of chassis.
Engine	Daimler AG OM470LA, 6 cylinders, diesel. Rated power/rpm: 280 kw /1700 rpm. Max. output torque/rpm: 1900 N.m /1300 rpm. Emission standard: EU Stage IV/EPA Tier 4f. Fuel tank capacity: 260 L.
Transmission	American Alison automatic transmission with 6 forward gears and 1 reverse gear.
Axles	High strength divided axles with independent suspension. Three axles for driving: 6×6×6.
Suspension	With advanced independent suspension technology, the right and left tires can move independently to improve the drive smoothness. The suspension is equipped with effective damped cylinder and accumulator buffer ; fixed on the frame, the main reducer can rise and fall with the frame to greatly improve the passing ability of vehicle. The stroke of suspension cylinder : -110mm ~ +110mm.
Tires	Tire specifications: 385/95 R25(14.00R25.)
Steering	Axle 1 mechanically steering and axles 2, 3 electric-hydraulic proportional steering.
Brakes	Service brake: double-circuit air pressure brake, acting on all wheels. Parking brake: spring-loaded brake, acting on the wheels of axles 1, 2 and 3. Auxiliary brake: engine retarded brake.

Driver's cab New type steel structure full dimension cab with suspension connecting structure, and there is shock absorber fitted at the rear of the cab, equipped with adjustable seats, safety glass of electrically operated door window lift, electric-adjustable mirrors, steering wheel adjustable in height and angle, large screen liquid crystal display. New type of combined control panel is reasonably and ergonomically arranged in arch shape. Heater, air conditioner and radio receiver are standard.

Electrical System DC 24 volts is in series with two 12-volt battery packs.



Superstructure

Frame	Designed and manufactured by XCMG, made of high-strength steel.
Hydraulic system	The load-sensing plunger pump and gear pump driven are used to control hoisting, elevating, telescoping, slewing and auxiliary system. Load-sensing proportional multi-way valve is equipped. Air-cooled hydraulic radiator is also applied.
Operating mode	Pilot electric proportional control is adopted with distributed CAN bus control technology. Apart from the normal control functions, it also has the functions of real time monitoring, automatic fault diagnosis, intelligent boom control, function self-adaptability and single cylinder pinning control.
Main winch system	Hydraulic motor with planetary gear reducer and constant-closed brake, specific anti-disorder rope winding drum, anti-coiling wire rope.
Slewing system	Single-row four-point ball contact external tooth slewing ring and driven by a hydraulic motor, with a planetary gear reducer and a normally closed brake equipped, for 360° continuous rotation. Power control and free slewing function as well as stepless speed regulation are available.

技术规格

Technical specifications

Operator's cab	The cab is ergonomically designed for safety and comfort. It is equipped with safety glass and protective grilles. Windshield sun shade, a sliding door and an adjustable seat are available. The cab can be tilted up to 20°. Heating & air conditioning are available.
Safety devices	Hydraulic balance valve, hydraulic relief valve, hydraulic two-way valve, LMI, display, central controller, length/angle sensor, oil pressure sensor and spring centering system for control levers. Lowering limiter for preventing wire rope from over-releasing. Anti-two block at boom head for preventing wire rope from over-winding. Anemometer for measuring the wind velocity.
LMI	The safety protection device is installed in operator's cab. When actual moment approaches overload value, it may send out visual alarm, and automatically stop dangerous movements before overloading. Overload memory function (black box) and fault self-diagnosis function are available.
Combined counterweight	Total weight is 12t. 7 counterweight combinations of 0t, 2.1t, 2.7t,3.4t, 4.5t, 7.6t and 12t are available.
Electrical System	24 V DC



Boom system

Boom	6-section, U-shape cross section, welding structure. Single-cylinder pinning interlocked telescoping system. 46%, 92% and 100% telescoping pattern are available. Boom length:10.3m ~ 48m.
Single top	Fitted at boom head, used for single line operation.
Fixed jib	Lattice welding structure, with 0° , 15° and 30° jib offset angles available. Jib length: 9.2m~16m.

Additional equipment

Independent jib head	2.5 m, may be installed on the tip of boom for lifting operations.
Auxiliary devices	Variable-focus wireless camera at boom head, rotating working lamp, cold weather starting device and beacon lamp.
Operating system	Wireless remote control device
Tires	Tire specifications:445/95 R25(16.00 R 25), 525/80 R25(20.5 R 25).
Auxiliary brake	Eddy current retarding brake

Product parts details As mentioned above, please refer to the product quotation for specific parts.

重量 Weight






车桥 Axle	1	2	3	总重量 Total weight
t	12	12	12	36








吊钩 Hook	倍率 No. of lines	吊钩重量 Weight kg	备注 Remarks
60 t	12	560	单钩 Single hook
35 t	7	305	单钩 Single hook
15 t	3	235	单钩 Single hook 选装 optional
5t	1	100	单钩 Single hook

作业速度 Working speeds

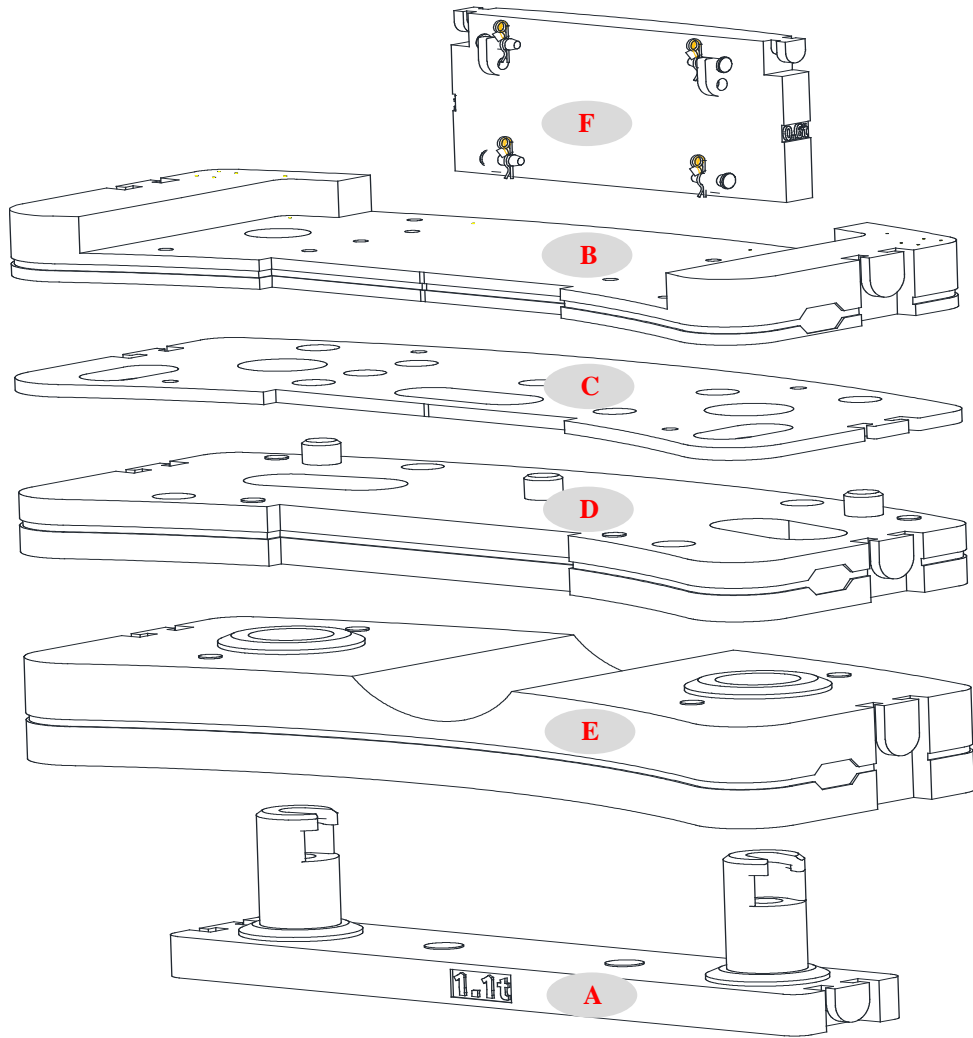


	 Km/h	
385/95 R 25 (14.00 R 25)	3~85	70%
445/95 R 25 (16.00 R 25)	3~85	63%
525/80 R 25 (20.5 R 25)	3~85	63%



作业机构 Drive	作业速度 Working speed	最大单绳拉力 Max. single line pull	钢丝绳直径/长度 Rope diameter/ length
	0-135 m/min, 单绳, 第4层, 空载 m/min, single line, 4th layer, no load	50KN	18 mm/208 m
	0-135 m/min, 单绳, 第4层, 空载 m/min, single line, 4th layer, no load	50KN	18 mm/140 m
	0-1.5 r/min		
	从-1°抬起至81°约38s Approx. 38s for boom elevation from -1° to 81°		
	从10.3m伸出至48m约310s Approx. 310s for boom extension from 10.3m to 48m		

平衡重 Counterweight



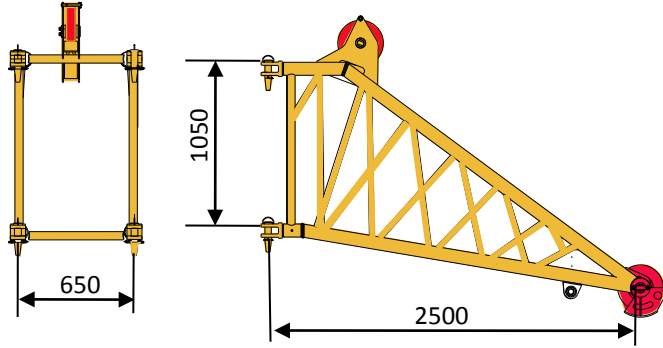
平衡重 Counterweight	A	B	C	D	E	F
尺寸 (长×宽×高) m Size (L×W×H) m	2.11×0.44 ×0.587	2.5×1.139 ×0.235	2.5×1.139 ×0.045	2.5×1.139 ×0.212	2.5×1.139 ×0.399	1.1×0.57 ×0.247
重量 t Weight t	1.1	2.1	0.7	3.1	4.4	0.6

工况模式 Working mode	12t	7.6t	4.5t	3.4 t	2.7t	2.1t
组合形式 Combinations	A+B+C+D+E+F	A+B+C+D+F	A+B+C+F	B+C+F	B+F	B

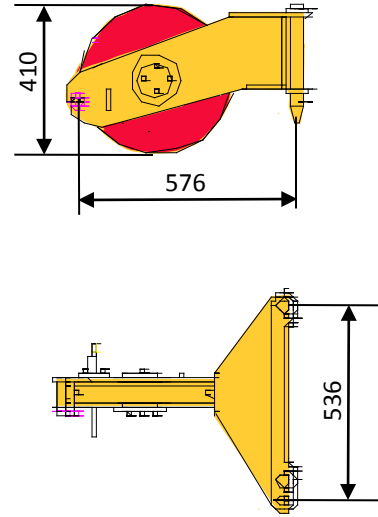
运输部件尺寸

Transportation components dimension

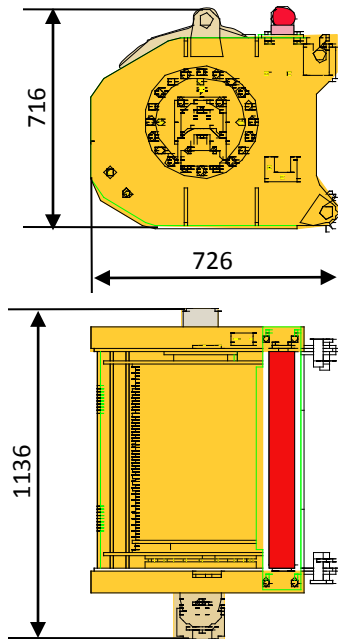
独立臂头 (选装) 435kg
Independent jib head (optional)



臂端单滑轮 46kg
Single top



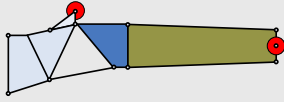
副起升机构 (含钢丝绳) 648kg
Auxiliary winch (rope included)



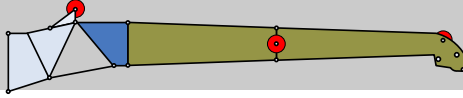
臂架组合方案

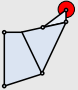


Boom / Jib combinations

副臂 - 9.2m
Jib - 9.2m



副臂 - 16m
Jib - 16m



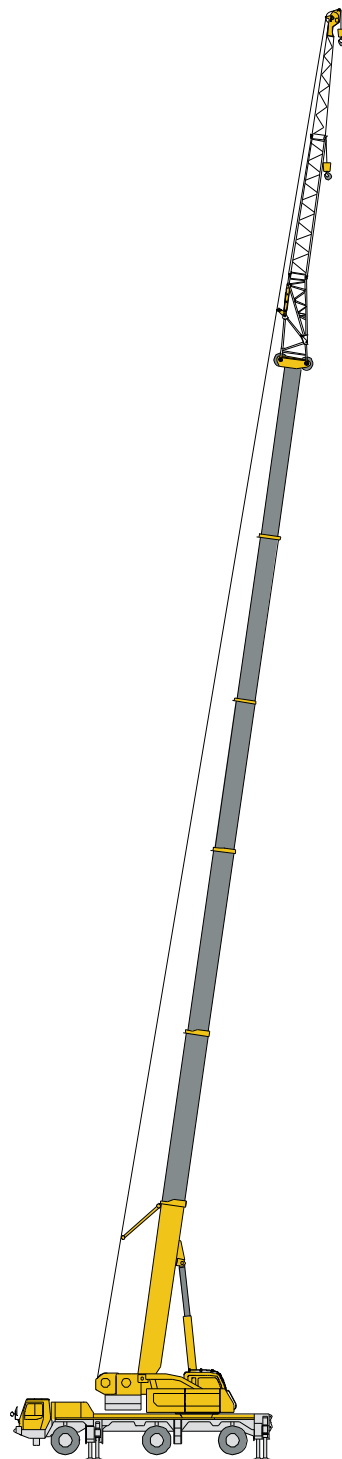
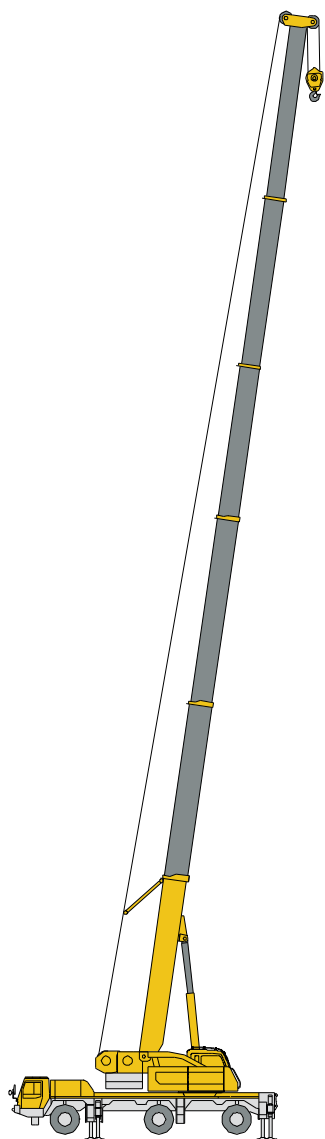
部件 Component	结构形式 Structure	尺寸 (长×宽×高) mm Size (L×W×H) mm	重量 kg Weight kg
连接架 Connection bracket		1100×650×1050	135.6
一节副臂总成 First jib section assembly		8760×650×580	485.4
二节副臂总成 Second jib section assembly		6300×250×360	240

臂架组合方案

Boom / Jib combinations

T 主臂

J 副臂

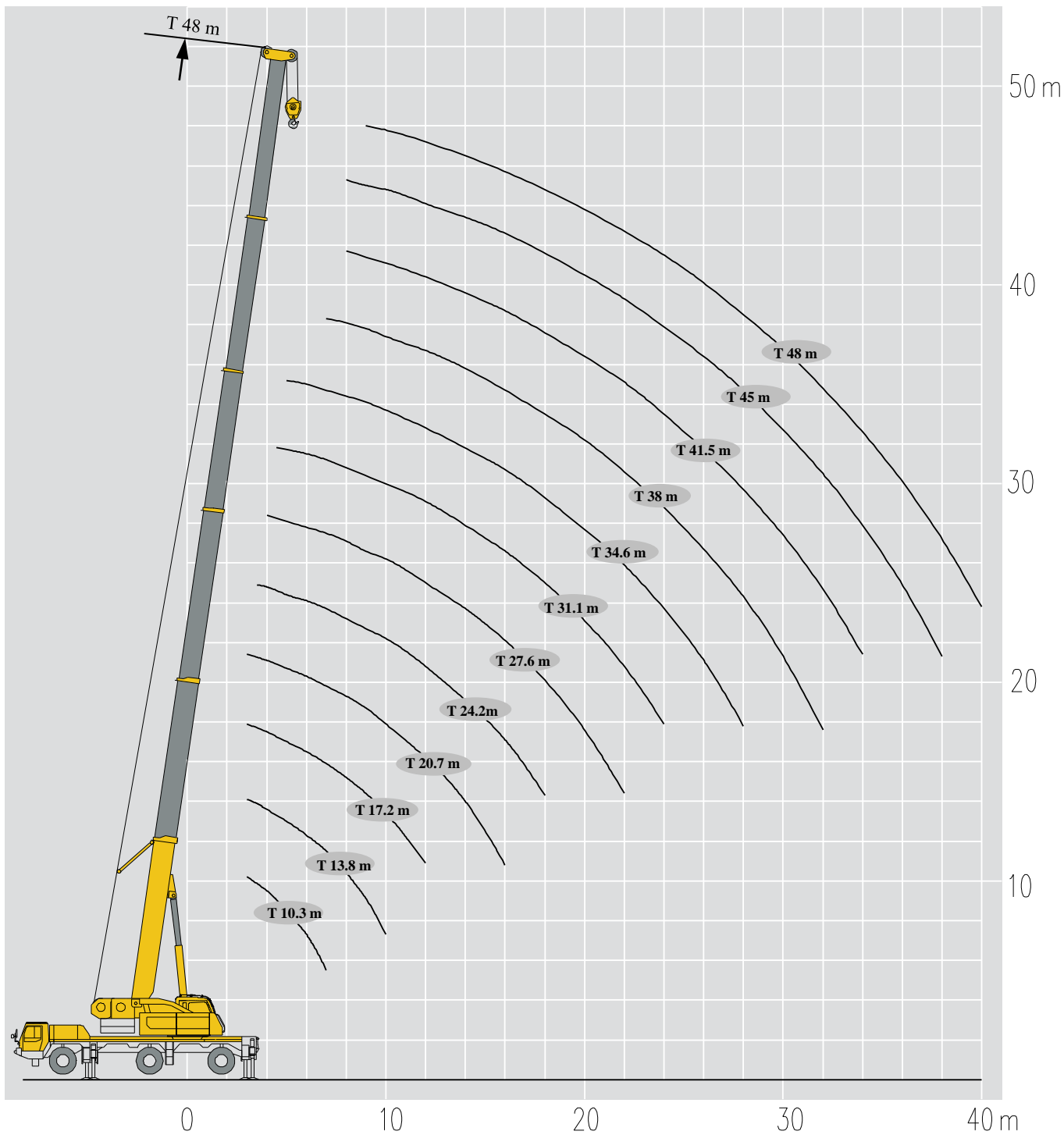


主臂
Telescopic boom

副臂
Jib

T : 10.3~48 m

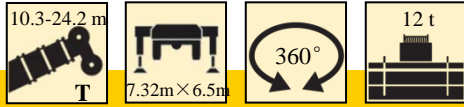
T : 41.6~48 m
J : 9.2~16 m



起重性能表

Lifting capacities

T 10.3~24.2m



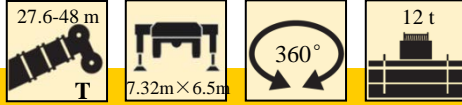
← m	10.3 m*	10.3 m	13.8 m	13.8 m	13.8 m	17.2 m	17.2 m	→ m
2.1	60							2.1
3	54.6	42.5	42.3	41.5	40.5	41.5	40.5	3
3.5	49.9	42.5	42.2	41.0	40.0	41.0	40.0	3.5
4	44.5	40.7	41.4	40.2	39.0	38.5	37.9	4
4.5	39.8	37.5	38.0	36.9	35.0	35.0	34.9	4.5
5	36.4	34.5	35.0	35.2	33.0	33.0	33.3	5
6	31.6	29.0	29.8	30.0	29.0	29.8	29.8	6
7	26.5	24.3	24.5	24.8	25.3	26.0	25.5	7
8			20.5	21.0	21.5	21.6	22.5	8
9			17.5	18.0	18.3	17.7	18.5	9
10			15.0	15.4	15.7	14.7	15.8	10
12						10.8	11.5	12
组合 combi nation	正后方作业	00000	01000	00100	00010	11000	01100	组合 combi nation

← m	17.2 m	20.7 m	20.7 m	20.7 m	24.2 m	24.2 m	24.2 m	→ m
3	28.1	35.0	27.6	23.9				3
3.5	26.4	35.0	25.8	23.0	27.4	30.0	23.7	3.5
4	24.8	35.0	23.9	22.1	24.5	30.0	22.8	4
4.5	23.4	33.5	21.5	21.2	22.4	29.0	22.0	4.5
5	22.1	31.5	20.3	20.3	21.4	28.0	21.2	5
6	19.9	28.5	18.2	19.1	19.4	27.2	19.9	6
7	18.1	25.5	16.5	17.8	17.8	24.7	18.7	7
8	16.6	21.5	15.1	16.3	16.3	22.0	17.7	8
9	15.4	18.5	13.8	15.1	14.9	18.5	16.3	9
10	14.4	15.9	12.7	14.0	13.8	15.7	15.1	10
12	12.1	11.1	11.0	12.2	11.2	11.5	12.2	12
14		8.5	8.9	9.9	8.6	9.0	9.7	14
16		6.7	7.1	8.0	6.8	7.1	8.1	16
18					5.5	5.8	6.7	18
组合 combi nation	00110	11100	02100	00111	12100	11110	01111	组合 combi nation

起重性能表

Lifting capacities

T 27.6~48m



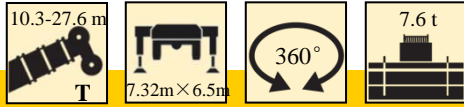
m	Lifting Capacity (t)									m
	27.6 m	27.6 m	27.6 m	31.1 m	31.1 m	31.1 m	34.6 m	34.6 m	34.6 m	
4	24.5	25.0	18.2							4
4.5	24.0	25.0	17.3	20.0	20.0	15.0				4.5
5	23.5	25.0	16.6	20.0	20.0	14.7	15.0	15.0		5
6	22.4	25.0	15.2	19.9	18.4	13.5	15.0	15.0		6
7	20.3	24.2	14.0	18.7	17.0	12.5	15.0	14.4		7
8	18.5	21.0	13.0	17.7	15.8	11.6	14.8	13.4		8
9	17.0	18.0	12.2	15.9	14.7	10.8	14.2	12.6		9
10	15.2	16.0	11.5	14.6	13.7	10.1	13.3	11.8		10
12	11.3	12.0	10.7	11.7	11.9	8.9	11.1	10.4		12
14	8.7	9.4	9.7	9.1	9.4	7.9	9.0	9.3		14
16	6.9	7.5	8.1	7.3	7.7	7.1	7.2	7.6		16
18	5.5	6.2	6.8	5.9	6.1	6.6	5.9	6.5		18
20	4.5	5.1	5.8	4.9	5.1	5.9	4.8	5.5		20
22	3.7	4.3	5.0	4.0	4.3	5.1	4.0	4.3		22
24				3.4	3.6	4.4	3.4	3.7		24
26							2.8	3.1		26
28							2.3	2.6		28
组合 combi nation	21110	11111	01112	21111	12111	01122	22111	12211		组合 combi nation

m	Lifting Capacity (t)									m
	34.6 m	38 m	38 m	38 m	41.5 m	41.5 m	45 m	48 m	48 m	
5	13.1									5
6	12.5									6
7	11.8	12.8	12.2	11.5						7
8	11.1	12.6	11.6	10.9	10.8	10.0	8.7			8
9	10.3	12.2	10.9	10.4	10.4	9.4	8.7	7.1		9
10	9.4	11.5	10.3	9.8	9.8	9.0	8.5	7.1		10
12	8.1	10.2	9.0	8.8	9.0	8.0	7.6	6.9		12
14	7.0	8.8	7.7	7.8	7.8	6.8	6.7	5.9		14
16	6.2	7.6	6.7	6.8	6.8	5.9	6.3	5.7		16
18	5.6	6.0	5.9	6.0	6.2	5.4	5.5	5.0		18
20	5.0	4.9	5.3	5.5	5.4	4.7	5.0	4.4		20
22	4.9	4.1	4.5	4.8	4.6	4.2	4.4	4.0		22
24	4.2	3.4	3.8	4.1	3.6	3.9	3.6	3.6		24
26	3.7	2.9	3.3	3.5	3.0	3.5	3.2	3.0		26
28	3.3	2.4	2.8	3.0	2.6	3.0	2.7	2.6		28
30		2.0	2.4	2.6	2.2	2.6	2.4	2.2		30
32		1.7	2.0	2.3	1.8	2.2	2.0	2.0		32
34					1.5	1.9	1.7	1.7		34
36							1.5	1.5		36
38							1.2	1.2		38
40								1.0		40
组合 combi nation	01222	22211	12221	11222	22221	12222	22222	33333		组合 combi nation

起重性能表

Lifting capacities

T 10.3~27.6m



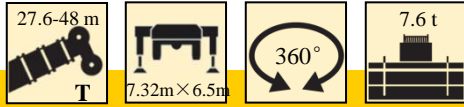
m	10.3 m							m
	10.3 m	13.8 m	13.8 m	13.8 m	17.2 m	17.2 m	17.2 m	
3	42.5	42.3	41.5	40.5	41.5	40.5	28.1	3
3.5	42.5	42.2	41.0	40.0	41.0	40.0	26.4	3.5
4	40.7	41.4	40.2	39.0	38.5	37.9	24.8	4
4.5	37.5	38.0	36.9	35.0	35.0	34.9	23.4	4.5
5	34.5	35.0	35.2	33.0	33.0	33.3	22.1	5
6	29.0	29.8	30.0	29.0	29.6	29.8	19.9	6
7	22.3	22.5	23.0	23.4	22.0	22.9	18.1	7
8		17.7	18.1	18.4	17.2	18.1	16.6	8
9		14.3	14.7	15.1	14.0	14.7	15.3	9
10		12.0	12.4	12.6	11.6	12.4	12.8	10
12					8.4	9.0	9.5	12
组合 combi nation	00000	01000	00100	00010	11000	01100	00110	组合 combi nation

m	20.7 m							m
	20.7 m	20.7 m	20.7 m	24.2 m	24.2 m	24.2 m	27.6 m	
3	35.0	27.6	23.9					3
3.5	35.0	25.8	23.0	27.4	30.0	23.7		3.5
4	35.0	23.9	22.1	24.5	30.0	22.8	24.5	4
4.5	33.5	21.5	21.2	22.4	29.0	22.0	24.0	4.5
5	31.5	20.3	20.3	21.4	28.0	21.2	23.5	5
6	28.5	18.2	19.1	19.4	27.2	19.9	22.4	6
7	22.4	16.5	17.8	17.8	22.9	18.7	20.3	7
8	17.6	15.1	16.3	16.3	18.1	17.7	17.8	8
9	14.3	13.8	15.1	14.3	14.7	15.7	14.4	9
10	11.9	12.4	13.4	12.0	12.4	13.2	12.1	10
12	8.6	9.0	10.0	8.7	9.0	9.9	8.7	12
14	6.6	6.9	7.8	6.7	6.9	7.7	6.7	14
16	5.0	5.4	6.3	5.1	5.4	6.2	5.2	16
18				4.0	4.4	5.0	4.1	18
20							3.2	20
22							2.6	22
组合 combi nation	11100	02100	00111	12100	11110	01111	21110	组合 combi nation

起重性能表

Lifting capacities

T 27.6~48m



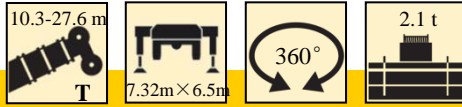
m	Lifting Capacity (t)							m
	27.6 m	27.6 m	31.1 m	31.1 m	31.1 m	34.6 m	34.6 m	
4	25.0	18.2						4
4.5	25.0	17.3	20.0	20.0	15.0			4.5
5	25.0	16.6	20.0	20.0	14.7	15.0	15.0	5
6	25.0	15.2	19.9	18.4	13.5	15.0	15.0	6
7	23.5	14.0	18.7	17.0	12.5	15.0	14.4	7
8	18.6	13.0	17.7	15.8	11.6	14.8	13.4	8
9	15.2	12.2	14.9	14.7	10.8	14.2	12.6	9
10	12.8	11.5	12.4	12.7	10.1	12.4	11.8	10
12	9.5	10.2	9.2	9.4	8.9	9.1	9.5	12
14	7.3	8.0	7.0	7.3	7.9	7.0	7.3	14
16	5.8	6.5	5.5	5.8	6.6	5.5	5.9	16
18	4.8	5.3	4.5	4.7	5.4	4.5	4.8	18
20	3.8	4.5	3.6	3.8	4.6	3.5	3.9	20
22	3.1	3.7	2.9	3.0	3.9	2.9	3.1	22
24			2.3	2.6	3.3	2.3	2.6	24
26						1.8	2.1	26
28						1.4	1.7	28
组合 combi nation	11111	01112	21111	12111	01122	22111	12211	组合 combi nation

m	Lifting Capacity (t)								m
	34.6 m	38 m	38 m	38 m	41.5 m	41.5 m	45 m	48 m	
5	13.1								5
6	12.5								6
7	11.8	12.8	12.2	11.5					7
8	11.1	12.6	11.6	10.9	10.8	10.0	8.7		8
9	10.3	12.2	10.9	10.4	10.4	9.4	8.7	7.1	9
10	9.4	11.5	10.3	9.8	9.8	9.0	8.5	7.1	10
12	8.1	9.2	9.0	8.8	9.0	8.0	7.6	6.9	12
14	7.0	7.1	7.5	7.8	7.3	6.8	6.7	5.9	14
16	6.2	5.6	6.0	6.3	5.8	5.9	6.0	5.7	16
18	5.4	4.6	4.8	5.1	4.7	5.1	4.8	4.8	18
20	4.6	3.6	4.0	4.3	3.8	4.2	4.0	4.0	20
22	3.9	2.9	3.3	3.6	3.1	3.5	3.3	3.3	22
24	3.2	2.4	2.8	3.0	2.6	2.9	2.8	2.8	24
26	2.8	1.9	2.3	2.6	2.1	2.5	2.3	2.3	26
28	2.4	1.5	1.9	2.1	1.7	2.1	1.9	1.9	28
30		1.2	1.5	1.8	1.3	1.7	1.5	1.5	30
32			1.2	1.5	1.0	1.4	1.2	1.2	32
34						1.2	1.0	1.0	34
组合 combi nation	01222	22211	12221	11222	22221	12222	22222	33333	组合 combi nation

起重性能表

Lifting capacities

T 10.3~27.6m



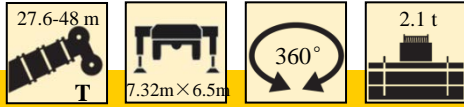
m	10.3 m							m
	10.3 m	13.8 m	13.8 m	13.8 m	17.2 m	17.2 m	17.2 m	
3	42.5	42.3	41.5	40.5	41.5	40.5	28.1	3
3.5	42.5	42.2	41.0	40.0	41.0	40.0	26.4	3.5
4	40.7	41.4	40.2	39.0	38.5	37.9	24.8	4
4.5	37.5	38.0	36.9	35.0	35.0	34.9	23.4	4.5
5	34.5	34.9	35.2	33.0	33.0	33.3	22.1	5
6	23.3	23.5	23.9	24.4	22.9	23.9	19.9	6
7	17.2	17.3	17.8	18.1	16.8	17.8	18.1	7
8		13.5	13.9	14.3	13.0	13.9	14.4	8
9		10.8	11.2	11.6	10.5	11.2	11.8	9
10		8.9	9.3	9.6	8.6	9.3	9.8	10
12					5.8	6.6	7.0	12
组合 combi nation	00000	01000	00100	00010	11000	01100	00110	组合 combi nation

m	20.7 m							m
	20.7 m	20.7 m	20.7 m	24.2 m	24.2 m	24.2 m	27.6 m	
3	35.0	27.6	23.9					3
3.5	35.0	25.8	23.0	27.4	30.0	23.7		3.5
4	35.0	23.9	22.1	24.5	28.0	22.8	24.5	4
4.5	33.5	21.5	21.2	22.4	27.0	22.0	24.0	4.5
5	31.5	20.3	20.3	21.4	25.0	21.2	23.5	5
6	23.4	18.2	19.1	19.4	23.9	19.9	22.4	6
7	17.2	16.5	17.8	17.3	17.8	18.7	17.4	7
8	13.4	13.9	15.0	13.5	13.9	14.8	13.6	8
9	10.7	11.2	12.3	10.8	11.2	12.2	10.9	9
10	8.8	9.2	10.3	8.9	9.3	10.2	9.0	10
12	6.1	6.6	7.5	6.2	6.6	7.4	6.3	12
14	4.4	4.8	5.7	4.5	4.8	5.6	4.5	14
16	3.1	3.5	4.5	3.2	3.5	4.3	3.3	16
18				2.4	2.7	3.4	2.4	18
20							1.7	20
22							1.2	22
组合 combi nation	11100	02100	00111	12100	11110	01111	21110	组合 combi nation

起重性能表

Lifting capacities

T 27.6~48m



m	27.6 m							m
	27.6 m	27.6 m	31.1 m	31.1 m	31.1 m	34.6 m	34.6 m	
4	25.0	18.2						4
4.5	24.0	17.3	20.0	20.0	15.0			4.5
5	22.0	16.6	20.0	20.0	14.7	15.0	15.0	5
6	20.0	15.2	19.9	18.4	13.5	15.0	15.0	6
7	18.3	14.0	18.0	17.0	12.5	15.0	14.4	7
8	14.3	13.0	14.1	14.3	11.6	14.0	13.4	8
9	11.7	12.2	11.4	11.6	10.8	11.3	11.7	9
10	9.7	10.5	9.4	9.7	10.1	9.4	9.8	10
12	7.0	7.7	6.7	6.9	7.9	6.7	7.0	12
14	5.2	5.9	4.8	5.1	6.0	4.8	5.2	14
16	3.9	4.6	3.7	3.9	4.8	3.6	4.0	16
18	3.0	3.7	2.8	2.9	3.8	2.8	3.0	18
20	2.4	2.9	2.1	2.3	3.1	2.1	2.4	20
22	1.8	2.4	1.5	1.8	2.6	1.5	1.8	22
24			1.1	1.3	2.1	1.1	1.4	24
26							1.0	26
组合 combi nation	11111	01112	21111	12111	01122	22111	12211	组合 combi nation

m	34.6 m								m
	34.6 m	38 m	38 m	38 m	41.5 m	41.5 m	45 m	48 m	
5	13.1								5
6	12.5								6
7	11.8	12.8	12.2	11.5					7
8	11.1	12.6	11.6	10.9	10.8	10.0	8.7		8
9	10.3	11.4	10.9	10.4	10.4	9.4	8.7	7.1	9
10	9.4	9.5	10.0	9.8	9.7	9.0	8.5	7.1	10
12	7.9	6.7	7.2	7.5	6.9	7.4	7.2	6.9	12
14	6.0	4.9	5.4	5.7	5.1	5.6	5.3	5.4	14
16	4.8	3.7	4.1	4.5	3.9	4.4	4.1	4.1	16
18	3.8	2.9	3.2	3.5	3.0	3.4	3.2	3.2	18
20	3.0	2.2	2.6	2.8	2.3	2.8	2.6	2.6	20
22	2.6	1.6	2.0	2.3	1.8	2.2	2.0	2.0	22
24	2.1	1.1	1.5	1.8	1.3	1.7	1.5	1.5	24
26	1.7		1.1	1.4	1.0	1.3	1.1	1.1	26
28	1.4			1.1		1.0			28
组合 combi nation	01222	22211	12221	11222	22221	12222	22222	33333	组合 combi nation

起重性能表

Lifting capacities

T 10.3~27.6m



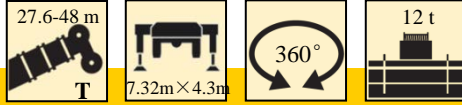
Height (m)	10.3 m	13.8 m	13.8 m	13.8 m	17.2 m	17.2 m	17.2 m	Height (m)
3	42.5	42.3	41.0	40.5	41.5	40.5	28.1	3
3.5	40.0	41.0	40.2	39.0	38.5	37.5	26.4	3.5
4	37.5	38.0	36.9	35.0	35.0	34.5	24.8	4
4.5	32.0	32.2	32.5	32.6	32.0	32.0	23.4	4.5
5	27.5	27.7	28.1	28.6	27.2	28.1	22.1	5
6	19.6	19.7	20.1	20.5	19.3	20.1	19.9	6
7	15.0	15.0	15.5	15.7	14.7	15.5	16.0	7
8		12.0	12.3	12.7	11.6	12.3	12.8	8
9		9.9	10.1	10.5	9.4	10.1	10.6	9
10		8.2	8.5	8.8	7.9	8.5	8.9	10
12					5.6	6.2	6.6	12
组合 combi nation	00000	01000	00100	00010	11000	01100	00110	组合 combi nation

Height (m)	20.7 m	20.7 m	20.7 m	24.2 m	24.2 m	24.2 m	27.6 m	Height (m)
3	35.0	27.6	23.9					3
3.5	35.0	25.8	23.0	27.4	28.0	23.7		3.5
4	35.0	23.9	22.1	24.5	26.0	22.8	24.5	4
4.5	32.0	21.5	21.2	22.4	24.0	22.0	24.0	4.5
5	27.6	20.3	20.3	21.4	22.0	21.2	23.5	5
6	19.6	18.2	19.1	19.4	20.1	19.9	19.8	6
7	15.0	15.4	16.4	15.0	15.5	16.3	15.1	7
8	11.9	12.3	13.3	12.0	12.3	13.1	12.1	8
9	9.8	10.1	11.1	9.8	10.1	10.9	9.9	9
10	8.2	8.5	9.4	8.2	8.5	9.3	8.2	10
12	5.9	6.2	7.1	6.0	6.2	6.9	6.0	12
14	4.4	4.7	5.5	4.4	4.8	5.4	4.5	14
16	3.3	3.7	4.4	3.4	3.7	4.3	3.4	16
18				2.6	2.9	3.5	2.6	18
20							2.0	20
22							1.5	22
组合 combi nation	11100	02100	00111	12100	11110	01111	21110	组合 combi nation

起重性能表

Lifting capacities

T 27.6~48m



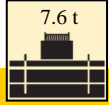
m	Lifting Capacity (t)								m
	27.6 m	27.6 m	31.1 m	31.1 m	31.1 m	34.6 m	34.6 m		
4	24.0	18.2							4
4.5	22.0	17.3	20.0	20.0	15.0				4.5
5	20.0	16.6	20.0	20.0	14.7	15.0	15.0		5
6	18.0	15.2	19.9	18.4	13.5	14.0	15.0		6
7	15.9	14.0	15.6	15.8	12.5	13.0	14.4		7
8	12.8	13.0	12.5	12.7	11.6	12.4	12.8		8
9	10.5	11.2	10.3	10.5	10.8	10.2	10.5		9
10	8.8	9.5	8.6	8.8	9.6	8.6	8.9		10
12	6.5	7.1	6.4	6.5	7.3	6.3	6.6		12
14	5.1	5.6	4.8	5.0	5.8	4.8	5.1		14
16	4.0	4.5	3.7	3.9	4.7	3.7	4.0		16
18	3.1	3.7	3.0	3.1	3.8	2.9	3.2		18
20	2.6	3.1	2.3	2.5	3.1	2.3	2.6		20
22	2.0	2.6	1.8	2.0	2.6	1.8	2.0		22
24			1.4	1.6	2.2	1.4	1.6		24
26						1.0	1.3		26
28							1.0		28
组合 combi nation	11111	01112	21111	12111	01122	22111	12211		组合 combi nation

m	Lifting Capacity (t)								m
	34.6 m	38 m	38 m	38 m	41.5 m	41.5 m	45 m	48 m	
5	13.1								5
6	12.5								6
7	11.8	12.8	12.2	11.5					7
8	11.1	12.5	11.6	10.9	10.8	10.0	8.7		8
9	10.3	10.3	10.7	10.4	10.4	9.4	8.7	7.1	9
10	9.4	8.7	9.1	9.4	8.8	9.0	8.5	7.1	10
12	7.3	6.4	6.7	7.0	6.5	7.0	6.7	6.7	12
14	5.7	4.8	5.2	5.4	5.0	5.4	5.2	5.2	14
16	4.6	3.8	4.2	4.3	3.9	4.3	4.2	4.2	16
18	3.8	3.0	3.3	3.6	3.1	3.5	3.3	3.3	18
20	3.1	2.4	2.7	2.9	2.6	2.9	2.7	2.7	20
22	2.6	1.9	2.2	2.4	2.0	2.4	2.2	2.2	22
24	2.2	1.4	1.8	2.0	1.6	2.0	1.8	1.8	24
26	1.9	1.1	1.4	1.7	1.3	1.6	1.4	1.4	26
28	1.6		1.2	1.4		1.3	1.1	1.1	28
30				1.1		1.0			30
组合 combi nation	01222	22211	12221	11222	22221	12222	22222	33333	组合 combi nation

起重性能表

Lifting capacities

T 10.3~27.6m



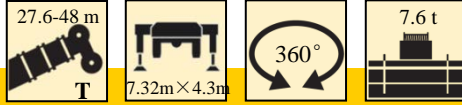
Reach (m)	10.3 m	13.8 m	13.8 m	13.8 m	17.2 m	17.2 m	17.2 m	Reach (m)
3	26.0	26.0	27.0	28.0	26.0	27.0	28.1	3
3.5	25.0	25.0	26.0	27.0	25.0	26.0	26.4	3.5
4	24.0	24.0	25.0	25.5	24.0	25.0	24.8	4
4.5	23.0	23.0	24.0	24.5	23.0	24.0	23.4	4.5
5	22.4	22.6	23.0	23.5	22.1	23.0	22.1	5
6	15.8	16.0	16.3	16.7	15.6	16.3	16.9	6
7	11.9	12.1	12.4	12.8	11.6	12.4	12.9	7
8		9.5	9.9	10.1	9.2	9.9	10.3	8
9		7.7	8.0	8.2	7.3	8.0	8.5	9
10		6.4	6.6	6.9	6.0	6.6	7.1	10
12					4.2	4.8	5.2	12
组合 combi nation	00000	01000	00100	00010	11000	01100	00110	组合 combi nation

Reach (m)	20.7 m	20.7 m	20.7 m	24.2 m	24.2 m	24.2 m	27.6 m	Reach (m)
3	26.0	27.6	23.9					3
3.5	25.0	25.8	23.0	27.4	26.0	23.7		3.5
4	24.0	23.9	22.1	24.5	25.0	22.8	24.0	4
4.5	23.0	21.5	21.2	22.4	22.0	22.0	23.0	4.5
5	22.5	20.3	20.3	21.4	20.0	21.2	22.6	5
6	15.9	16.3	17.4	16.0	16.3	17.3	16.0	6
7	12.0	12.4	13.4	12.1	12.4	13.3	12.2	7
8	9.4	9.8	10.8	9.5	9.9	10.6	9.6	8
9	7.7	8.0	8.9	7.7	8.0	8.8	7.7	9
10	6.3	6.6	7.5	6.4	6.6	7.4	6.4	10
12	4.4	4.8	5.5	4.4	4.8	5.4	4.5	12
14	3.1	3.5	4.3	3.2	3.5	4.2	3.2	14
16	2.3	2.6	3.3	2.3	2.6	3.2	2.4	16
18				1.7	2.0	2.6	1.7	18
20							1.2	20
组合 combi nation	11100	02100	00111	12100	11110	01111	21110	组合 combi nation

起重性能表

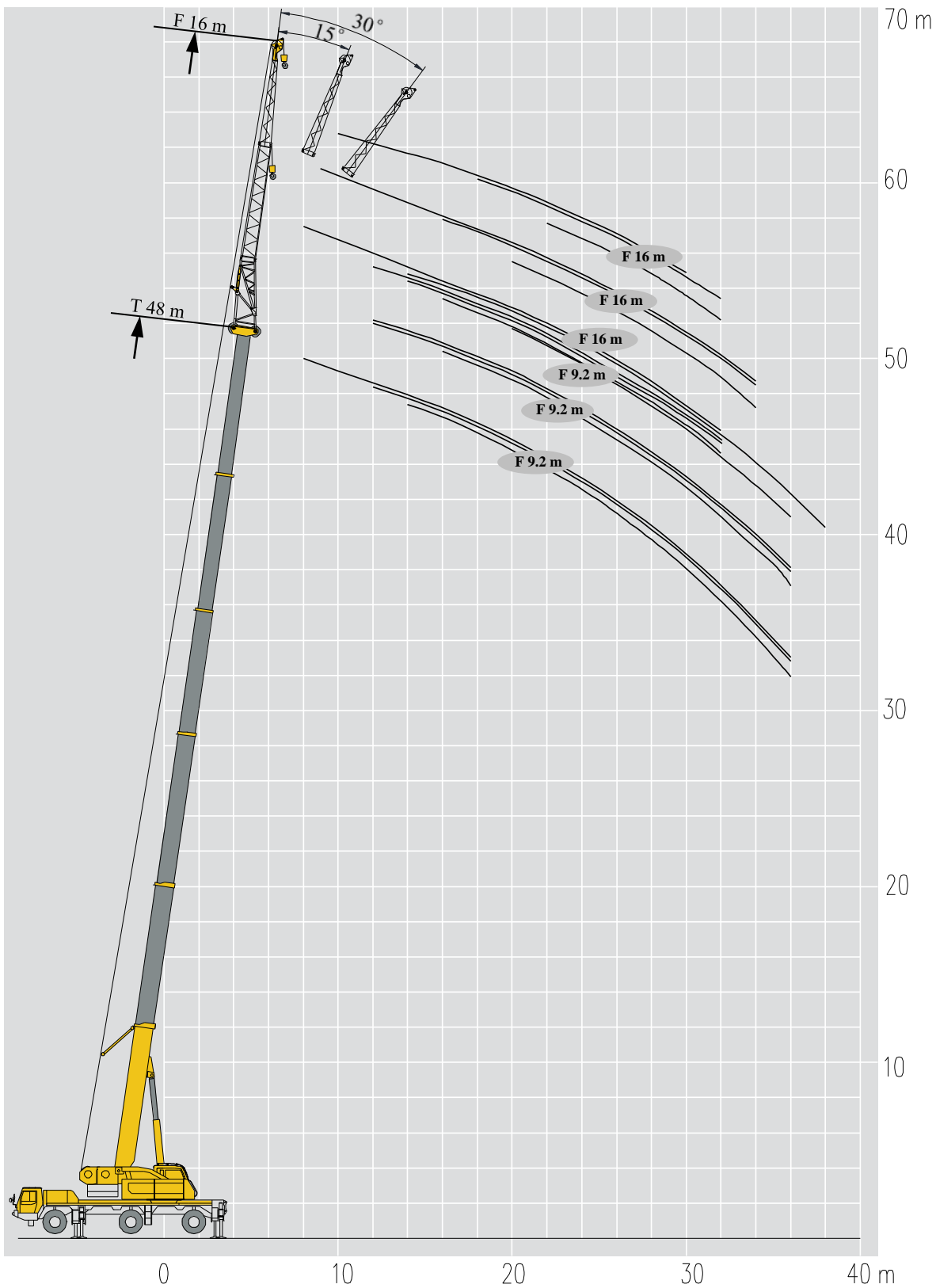
Lifting capacities

T 27.6~48m



m	Lifting Capacity (t)							m
	27.6 m	27.6 m	31.1 m	31.1 m	31.1 m	34.6 m	34.6 m	
4	24.0	18.2						4
4.5	22.0	17.3	20.0	20.0	15.0			4.5
5	20.0	16.6	20.0	20.0	14.7	15.0	15.0	5
6	16.8	15.2	16.5	16.7	13.5	14.0	15.0	6
7	12.8	13.6	12.6	12.8	12.5	12.5	12.9	7
8	10.3	11.0	9.9	10.2	11.1	9.9	10.3	8
9	8.4	9.1	8.2	8.3	9.2	8.1	8.4	9
10	7.1	7.7	6.7	7.0	7.7	6.7	7.1	10
12	5.1	5.7	4.8	5.1	5.8	4.8	5.1	12
14	3.8	4.4	3.6	3.8	4.5	3.6	3.8	14
16	2.9	3.5	2.7	2.9	3.6	2.6	3.0	16
18	2.2	2.8	2.0	2.2	2.9	2.0	2.3	18
20	1.7	2.2	1.5	1.7	2.4	1.4	1.8	20
22	1.3	1.8	1.1	1.3	2.0	1.1	1.4	22
24					1.6		1.0	24
组合 combi nation	11111	01112	21111	12111	01122	22111	12211	组合 combi nation

m	Lifting Capacity (t)								m
	34.6 m	38 m	38 m	38 m	41.5 m	41.5 m	45 m	48 m	
5	13.1								5
6	12.5								6
7	11.8	12.7	12.2	11.5					7
8	11.1	10.0	10.5	10.7	10.2	10.0	8.7		8
9	9.2	8.2	8.6	8.8	8.3	8.8	8.6	7.1	9
10	7.7	6.8	7.2	7.5	7.0	7.4	7.2	7.1	10
12	5.8	4.9	5.3	5.5	5.1	5.4	5.3	5.3	12
14	4.5	3.7	4.0	4.3	3.8	4.2	4.0	4.0	14
16	3.6	2.7	3.1	3.3	2.9	3.2	3.1	3.1	16
18	2.9	2.1	2.4	2.6	2.2	2.6	2.4	2.4	18
20	2.4	1.5	1.9	2.1	1.7	2.0	1.9	1.9	20
22	2.0	1.1	1.4	1.7	1.3	1.6	1.4	1.4	22
24	1.5		1.1	1.4		1.3	1.1	1.1	24
26	1.3			1.0		1.0			26
28	1.0								28
组合 combi nation	01222	22211	12221	11222	22221	12222	22222	33333	组合 combi nation



起重性能表

Lifting capacities

J 9.2m

m	10.3-38 m T			9.2 m F			7.32m×6.5m			360°			12 t		
	10.3 m			34.6 m			38 m								
	0°	15°	30°	0°	15°	30°	0°	15°	30°	0°	15°	30°			
3	7.9												3		
3.5	7.7	6.8											3.5		
4	7.4	6.7											4		
4.5	7.1	6.7											4.5		
5	6.8	6.7											5		
6	6.3	6.2	5.2										6		
7	5.8	5.6	5	5									7		
8	5.2	5.2	4.8	5									8		
9	4.7	4.6	4.2	5	5								9		
10	4.2	4	3.8	5	5		5						10		
12	3.3	3.2	3	5	5	5	5	5.0	4.3				12		
14	2.7	2.6	2.5	5	5	5	5	4.6	4.1				14		
16				5	5	4.9	4.6	4.1	3.9				16		
18				5	4.9	4.7	4.2	3.9	3.5				18		
20				4.7	4.4	4.2	3.5	3.5	3.1				20		
22				3.9	3.9	3.7	3.2	3.1	2.9				22		
24				3.5	3.4	3.4	2.8	2.7	2.7				24		
26				3	3.1	3	2.4	2.4	2.4				26		
28				2.5	2.7	2.7	2.2	2.1	2				28		
30				2.1	2.2	2.3	2	2	2				30		
32				1.8	1.9	2	1.7	1.8	1.7				32		
34				1.5	1.6		1.5	1.5	1.5				34		
36				1.2	1.3		1.2	1.3					36		
38							1	1.1					38		
组合 combi nation	00000			22111			22211			组合 combi nation					

m	41.6-48 m T			9.2 m F			7.32m×6.5m			360°			12 t		
	41.6 m			45.1 m			48 m								
	0°	15°	30°	0°	15°	30°	0°	15°	30°	0°	15°	30°			
10	5												10		
12	5	4.8		3.9	3.6		3.4						12		
14	4.8	4.6	4.2	3.8	3.5		3.3	3.4					14		
16	4.3	4.2	4	3.7	3.3	3.2	3.3	3.3	3				16		
18	3.8	3.6	3.5	3.2	3.1	2.9	3	2.9	2.7				18		
20	3.3	3.2	3.2	2.8	2.7	2.6	2.7	2.5	2.4				20		
22	2.8	2.8	2.7	2.6	2.5	2.3	2.2	2.2	2.1				22		
24	2.6	2.4	2.4	2.3	2.2	2.1	2	1.9	1.8				24		
26	2.2	2.1	2.1	2	2	2	1.7	1.6	1.5				26		
28	2	2	1.9	1.7	1.6	1.5	1.5	1.4	1.4				28		
30	1.7	1.7	1.6	1.5	1.4	1.4	1.3	1.3	1.2				30		
32	1.5	1.5	1.5	1.4	1.3	1.2	1	1	1				32		
34	1.4	1.3	1.3	1.1	1.1	1.1							34		
36	1.1	1.1	1.1	1	1	1							36		
组合 combi nation	22221			22222			33333			组合 combi nation					

起重性能表 Lifting capacities

J 9.2m

m	10.3-38 m T			9.2 m F			7.32m×6.5m			360°			7.6 t		
	10.3 m			34.6 m			38 m			m					
	0°	15°	30°	0°	15°	30°	0°	15°	30°	0°	15°	30°			
3	7.9												3		
3.5	7.7	6.8											3.5		
4	7.4	6.7											4		
4.5	7.1	6.7											4.5		
5	6.8	6.7											5		
6	6.3	6.2	5.2										6		
7	5.8	5.6	5	5									7		
8	5.2	5.2	4.8	5									8		
9	4.7	4.6	4.2	5	5								9		
10	4.2	4	3.8	5	5		5						10		
12	3.3	3.2	3	5	5	5	5	5.0	4.3				12		
14	2.7	2.6	2.5	5	5	5	5	4.6	4.1				14		
16				5	5	4.9	4.6	4.1	3.9				16		
18				4.9	4.9	4.7	4.2	3.9	3.5				18		
20				3.9	4.2	4.2	3.5	3.5	3.1				20		
22				3.2	3.4	3.6	3.2	3.1	2.9				22		
24				2.6	2.8	3	2.6	2.7	2.7				24		
26				2.1	2.3	2.4	2.1	2.3	2.4				26		
28				1.7	1.9	2	1.7	1.9	2				28		
30				1.4	1.5	1.6	1.4	1.5	1.6				30		
32				1.1	1.2	1.3	1.1	1.2	1.3				32		
组合 combin ation	00000			22111			22211			组合 combi nation					

m	41.6-48 m T			9.2 m F			7.32m×6.5m			360°			7.6 t		
	41.6 m			45.1 m			48 m			m					
	0°	15°	30°	0°	15°	30°	0°	15°	30°	0°	15°	30°			
10	5												10		
12	5	4.8		3.9	3.6		3.4						12		
14	4.8	4.6	4.2	3.8	3.5	0	3.3	3.4					14		
16	4.3	4.2	4	3.7	3.3	3.2	3.3	3.3	3				16		
18	3.8	3.6	3.5	3.2	3.1	2.9	3	2.9	2.7				18		
20	3.3	3.2	3.2	2.8	2.7	2.6	2.7	2.5	2.4				20		
22	2.8	2.8	2.7	2.6	2.5	2.3	2.2	2.2	2.1				22		
24	2.6	2.4	2.4	2.3	2.2	2.1	2	1.9	1.8				24		
26	2.2	2.1	2.1	2	2	2	1.7	1.6	1.5				26		
28	1.8	2	1.9	1.7	1.6	1.5	1.5	1.4	1.4				28		
30	1.4	1.6	1.6	1.5	1.4	1.4	1.3	1.3	1.2				30		
32	1.1	1.3	1.4	1.3	1.3	1.2	1	1	1				32		
34		1	1.1	1	1.1	1.1							34		
组合 combi nation	22221			22222			33333			组合 combi nation					

起重性能表

Lifting capacities

J 16m

m	10.3-38 m T			16 m F			7.32m×6.5m	360°	12 t	10.3 m			34.6 m			38 m			m
	0°	15°	30°	0°	15°	30°				0°	15°	30°	0°	15°	30°				
3	4.1																		3
3.5	4.1																		3.5
4	4																		4
4.5	4																		4.5
5	3.9																		5
6	3.7																		6
7	3.6																		7
8	3.4							3.9											8
9	3.2	3.2						3.8											9
10	3.1	3						3.8											10
12	2.8	2.6	2.4					3.7	3.1				3.3						12
14	2.6	2.5	2.3					3.5	3				3.2						14
16	2.3	2.2	2					3.4	2.9	2.4			3.2	2.8					16
18	2	2	1.8					3.3	2.8	2.4			3.1	2.6					18
20	1.7	1.8	1.6					3.2	2.7	2.3			2.8	2.6	2.3				20
22								3	2.6	2.3			2.7	2.5	2.2				22
24								2.9	2.5	2.2			2.4	2.4	2.1				24
26								2.7	2.4	2.2			2.1	2	2				26
28								2.5	2.4	2.1			2	1.9	1.9				28
30								2.3	2.3	2.1			1.9	1.9	1.7				30
32								2	2.1	2.1			1.6	1.5	1.5				32
34								1.7	1.9	1.9				1.3	1.3				34
36								1.4	1.6	1.7				1.1	1.1				36
38								1.2	1.3	1.4				1					38
40									1.1										40
组合 combination	00000						22111						22211						组合 combination

m	41.6-48 m T			16 m F			7.32m×6.5m	360°	12 t	41.6 m			45.1 m			48 m			m
	0°	15°	30°	0°	15°	30°				0°	15°	30°	0°	15°	30°				
12	3							2.6					2.3						12
14	2.8							2.6					2.2						14
16	2.8	2.6						2.5	2.4				2.2						16
18	2.8	2.5						2.4	2.3				2.2	2.2					18
20	2.6	2.5	2.2					2.3	2.2	2			2.1	2.1					20
22	2.4	2.4	2.2					2.2	2.2	2			2	2.1	2				22
24	2.3	2.3	2.1					1.9	2	1.9			1.7	1.7	1.7				24
26	2.1	1.9	1.9					1.7	1.7	1.7			1.5	1.5	1.4				26
28	1.8	1.8	1.8					1.5	1.5	1.5			1.4	1.4	1.3				28
30	1.5	1.5	1.5					1.4	1.4	1.4			1.1	1.1	1.1				30
32	1.4	1.4	1.3					1.2	1.2	1.3				1	1				32
34		1.2	1.2					1.1	1.1	1.1									34
36		1.1	1.1																36
38		1																	38
40		0.8																	40
组合 combination	22221						22222						33333						组合 combination

起重性能表

Lifting capacities

J 16m

m	10.3-38 m T			16 m F			360°	7.6 t			m
	10.3 m			34.6 m				38 m			
	0°	15°	30°	0°	15°	30°	0°	15°	30°		
3	4.1									3	
3.5	4.1									3.5	
4	4									4	
4.5	4									4.5	
5	3.9									5	
6	3.7									6	
7	3.6									7	
8	3.4			3.9						8	
9	3.2	3.2		3.8						9	
10	3.1	3		3.8						10	
12	2.8	2.6	2.4	3.7	3.1		3.3			12	
14	2.6	2.5	2.3	3.5	3		3.2			14	
16	2.3	2.2	2	3.4	2.9	2.4	3.2	2.8		16	
18	2	2	1.8	3.3	2.8	2.4	3.1	2.6		18	
20	1.7	1.8	1.6	3.2	2.7	2.3	2.8	2.6	2.3	20	
22				3	2.6	2.3	2.7	2.5	2.2	22	
24				2.9	2.5	2.2	2.4	2.4	2.1	24	
26				2.4	2.4	2.2	2.1	2	2	26	
28				1.9	2.2	2.1	1.9	1.9	1.9	28	
30				1.6	1.8	2.1	1.6	1.8	1.7	30	
32				1.3	1.5	1.7	1.2	1.5	1.5	32	
34				1	1.2	1.4		1.2	1.3	34	
36					1	1.1			1.1	36	
组合 combination	00000			22111			22211			组合 combination	



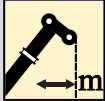
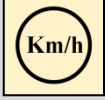










m	41.6-48 m T			16 m F			360°	7.6 t			m
	41.6 m			45.1 m				48 m			
	0°	15°	30°	0°	15°	30°	0°	15°	30°		
12	3			2.6			2.3			12	
14	2.8			2.6			2.2			14	
16	2.8	2.6		2.5	2.4		2.2			16	
18	2.8	2.5		2.4	2.3		2.2	2.2		18	
20	2.6	2.5	2.2	2.3	2.2	2	2.1	2.1		20	
22	2.4	2.4	2.2	2.2	2.2	2	2	2.1	2	22	
24	2.3	2.3	2.1	1.9	2	1.9	1.7	1.7	1.7	24	
26	2.1	1.9	1.9	1.7	1.7	1.7	1.5	1.5	1.4	26	
28	1.8	1.8	1.8	1.5	1.5	1.5	1.4	1.4	1.3	28	
30	1.5	1.5	1.5	1.4	1.4	1.4	1.1	1.1	1.1	30	
32	1.3	1.4	1.3	1.2	1.2	1.3		1	1	32	
34		1.2	1.2	1.1	1.1	1.1				34	
36		1	1.1							36	
组合 combination	22221			22222			33333			组合 combination	

符号标识

Description of symbols

常规标识

General symbols

	支腿 Outriggers		车桥 Axle
	工作幅度 Radius		行驶速度 Driving speed
	吊臂仰角 Boom position		爬坡能力 Gradeability
	吊臂长度 Boom length		轮胎 Tires
	吊钩 Hook block		平衡重 Counterweight
	360°全回转 360° rotation		上车 superstructure
	卷扬 Winch		底盘 Chassis

起重作业标识

Crane specific symbols

	主臂 Boom		副臂 Jib
------------------------------------------------------------------------------------	------------	-------------------------------------------------------------------------------------	-----------

1. The total rated loads given in the rated load charts are the maximum lifting capacity when the crane is set up on firm and level ground, which includes the weight of the hook block and slings. The weight of above-mentioned devices should be deducted to correctly calculate the load weight.
2. The working radius shown in the rated load charts is the radius when the load is lifted off the ground, and it is the actual value including loaded boom deflection.
3. A lifting operation is permissible only when the wind force is below grade 5 (instantaneous wind speed is 14.1/s, wind pressure is 125N/m²).
4. Before beginning lifting operation, the operator should know the weight of the load to be lifted and its working range, and then select proper working conditions. Never operate the crane beyond the limit shown in the chart. Use the lower value from the chart when the boom length or working radius is between the range of values.
5. Observe the boom angle limit. Never operate the crane with the boom angle beyond the recommended limit even if a load is not being carried. Otherwise, the crane will tip.
6. The boom length given in the rated load charts should accord with the telescoping code of boom sections .



地址：中国江苏徐州市铜山路165号

Add : No.165 Tongshan Road Xuzhou Jiangsu China

电话(Tel) : 0516-83462242/83462350

质量监督电话(Quality Inquiry Tel) : 0516-87888268

备件电话(Spare Parts Tel) : 0516-83461542

邮编(Post Code) : 221004

网址(Web) : www.xcmg.com/qizhongji

服务热线 Service Tel

400-110-9999

400-001-5678



本印刷品不属于合同。出于产品不断改进的需要，我们保留对产品型号、参数、配置进行变更的权利，恕不另行通知。图片仅供参考，具体产品以实物为准。图片中产品可能并非标准配置，部分部件可能需要另行购置。办理牌照和上路行驶需遵守当地法规。

This print does not belong to the contract. We reserve the right to modify the design (such as product model, parameters and configuration) without notice for improvement. The pictures are just for reference. The product in the picture may not be standard configuration. Some parts need to be purchased separately. Conform to the local laws for license application and road traveling.